

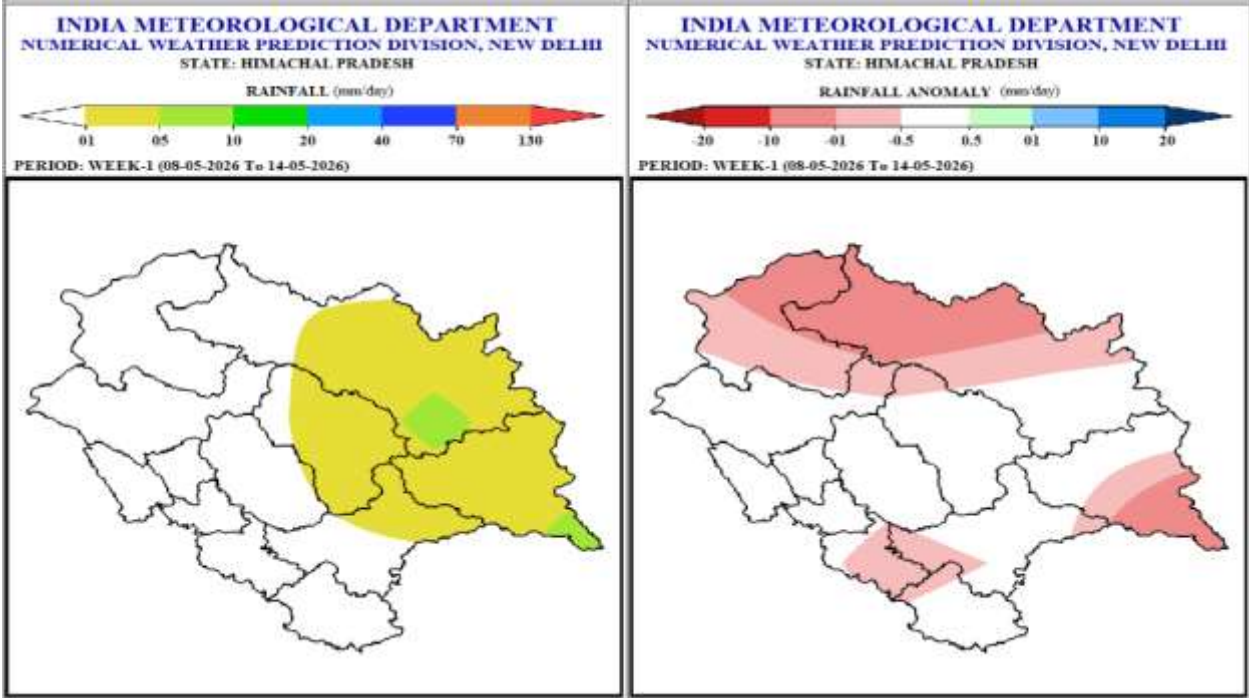
## Extended Range Weather Forecast

Date: - 07.05.2026

Weather Forecast and Warning for two weeks w.e.f. 08<sup>th</sup> May, 2026

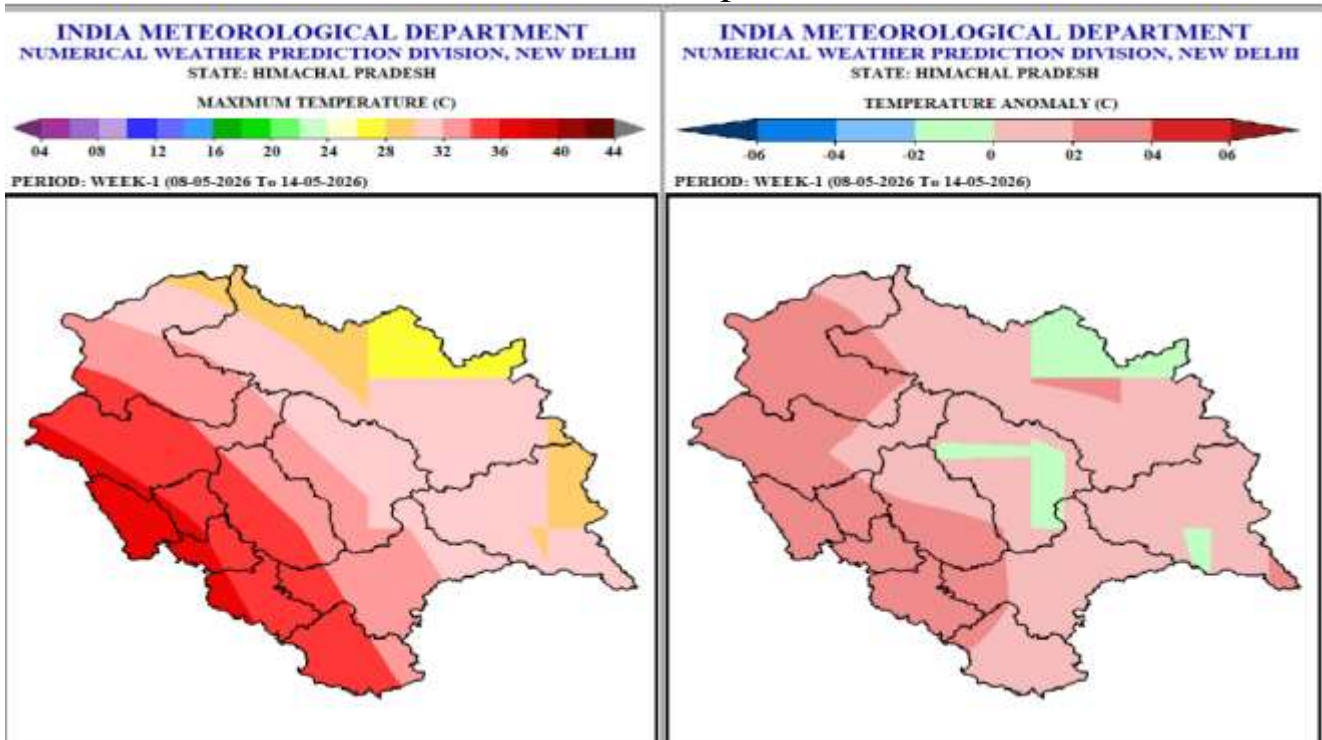
Week 1 (08<sup>th</sup> May to 14<sup>th</sup> May 2026)

### Rainfall



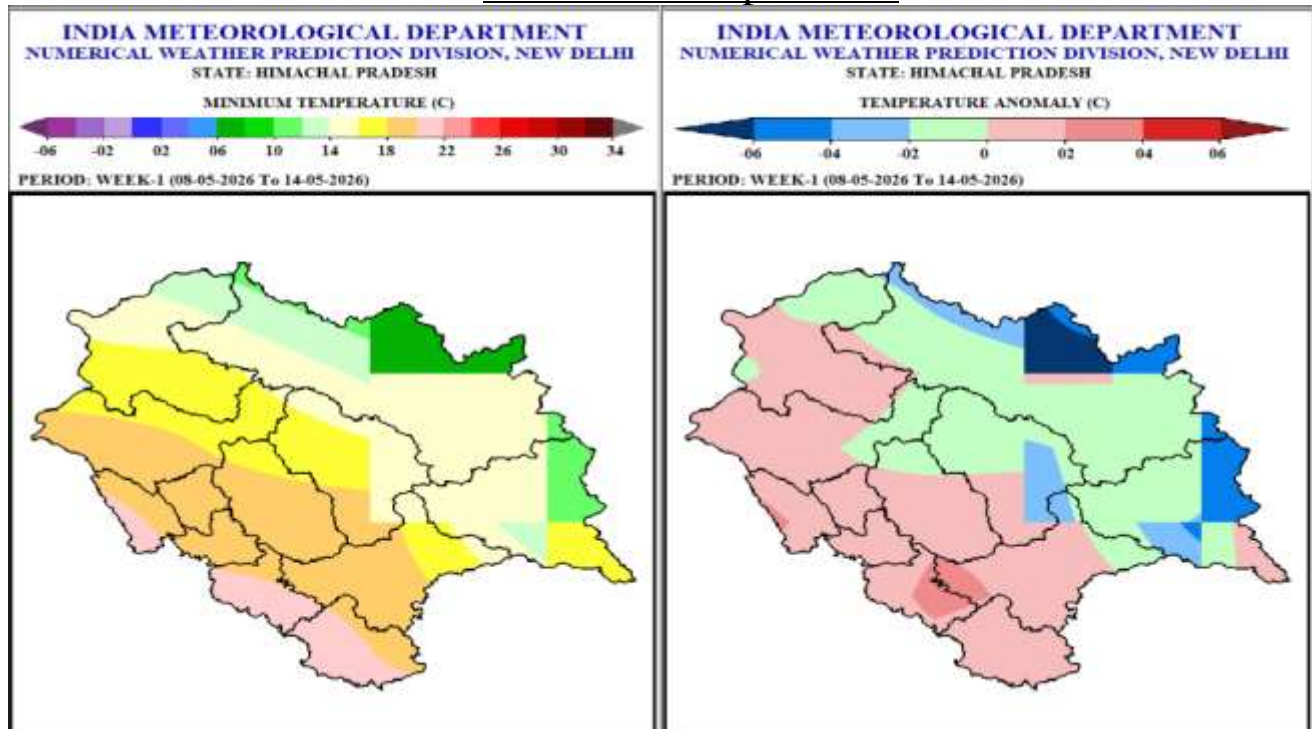
- Light rain/snow likely at isolated places over the state on 07<sup>th</sup> & 08<sup>th</sup> May 2026. Light to moderate rain/snow likely at few places over the state on 11<sup>th</sup> May 2026 and likely at many places on 12<sup>th</sup> and 13<sup>th</sup> May 2026. Dry weather likely over the state for the remaining days of the week.
- Rainfall anomaly very likely to be normal over many parts of the state and below normal for some parts of Lahaul-Spiti, Chamba & Kinnaur districts in the week 1.

## Maximum Temperatures



- Maximum Temperatures very likely to be in the range of 18-24°C over many parts of the high hills; in the range of 24-34°C over many parts of the mid hills and in the range of 30-36°C over many parts of the low hills/plains during many days of the week 1.
- Maximum Temperatures very likely to be normal for many parts of the state and above normal for Una, Bilaspur, Hamirpur, Solan districts & for isolated parts of Chamba, Kangra districts in the week 1.

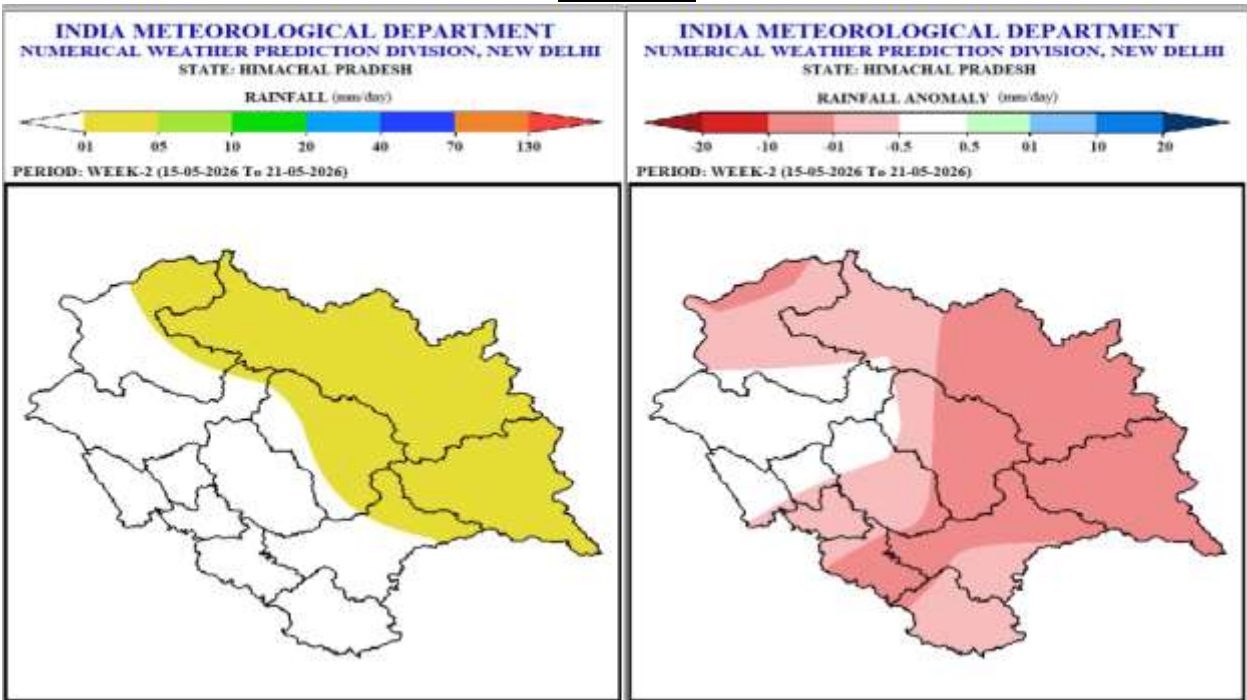
## Minimum Temperatures



- Minimum Temperatures very likely to be in the range of 16-22°C over many parts of the low hills/plains; in the range of 12-16 °C over many parts of the mid hills and in the range of 04 to 10°C over many parts of the high hills during many days of the week 1.
- Minimum Temperatures very likely to be normal over most parts of the state; appreciably to markedly below normal for isolated parts of Kinnaur, Kullu & Lahaul-Spiti districts in the week 1.

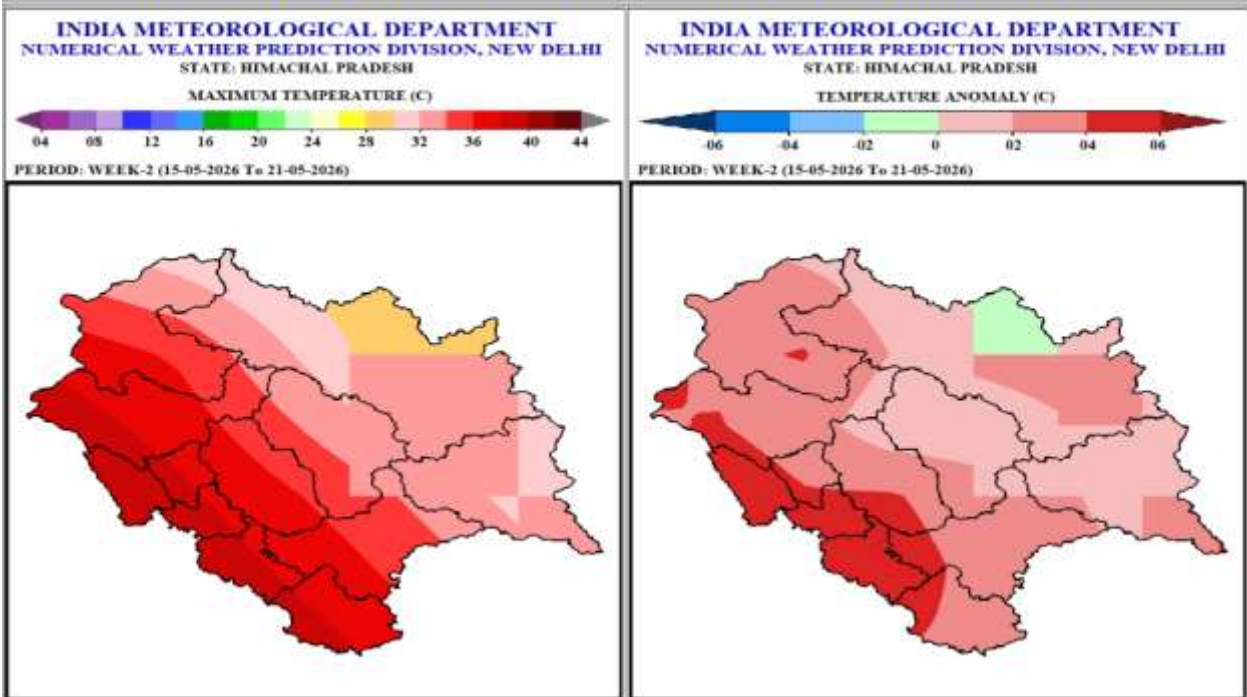
## Week 2 (15<sup>th</sup> May to 21<sup>st</sup> May)

### Rainfall



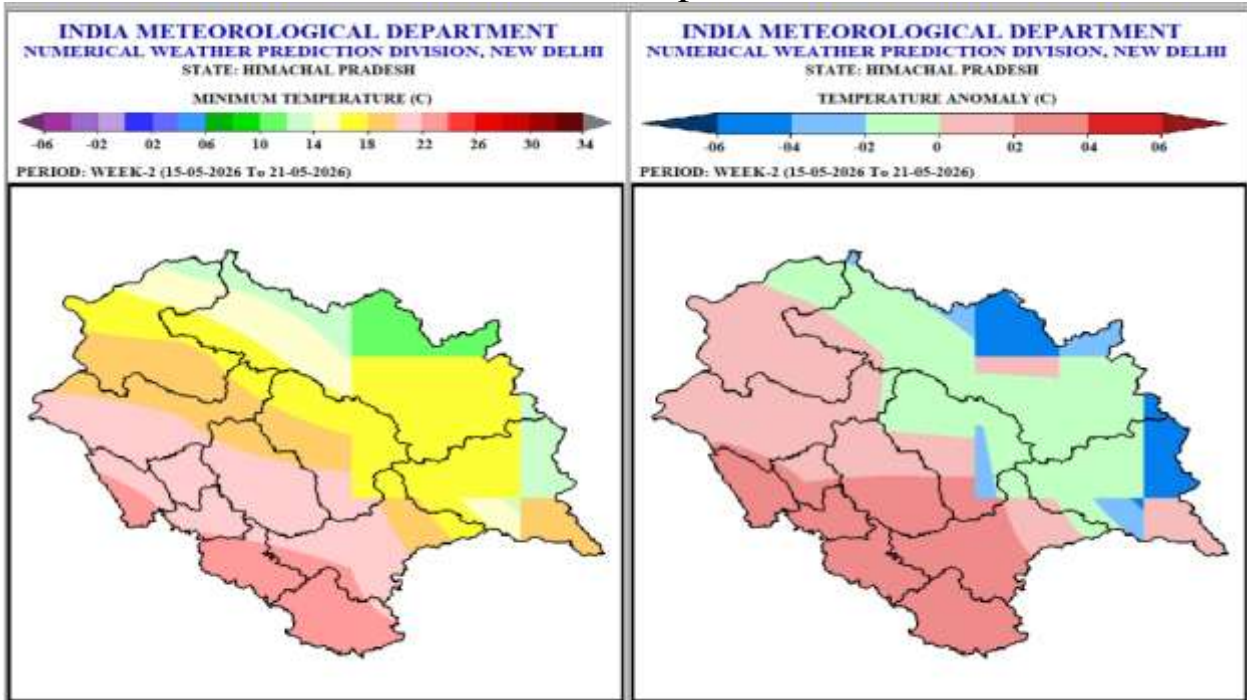
- Light rain/snow likely over few parts of the high & mid hills of the state during some days of the week 2.
- Rainfall anomaly likely to be normal over many parts of the state and below normal for some parts of Kinnaur, Shimla, Lahaul-Spiti, Solan and Kullu districts in the week 2.

### Maximum Temperatures



- Maximum Temperatures likely to be in the range of 20-26°C over many parts of the high hills; in the range of 28-34°C over many parts of the mid hills and in the range of 32-38 °C over many parts of the low hills/plains during many days of the week 2.
- Maximum Temperatures likely to be above normal for many parts of the state; appreciably above normal over isolated parts of the low hills/plains of the state and normal for isolated parts of Kullu, Lahaul-Spiti & Kinnaur districts in the week 2.

## Minimum Temperatures



- Minimum Temperatures are likely to be in the range of 18-22°C over many parts of the low hills/plains; in the range of 16-20°C over many parts of the mid hills and in the range of 06 to 16 °C over many parts of the high hills during many days of the week 2.
- Minimum Temperatures likely to be normal over many parts of the state; above normal over isolated parts of Una, Bilaspur, Solan, Shimla & Sirmaur districts; and appreciable below normal for isolated parts of Kinnaur & Lahaul-Spiti districts in the week 2.

### Outlook for next 2 weeks

Week	Max. Temp.	Min. Temp.	Rainfall Anomaly
<b>Week 3</b> <b>22<sup>nd</sup> May</b> <b>to 28<sup>th</sup> May</b>	Above normal; Normal for Kullu district and some parts of Lahaul-Spiti, Mandi, Kinnaur & Shimla districts	Normal; Above Normal for Una, Solan, Sirmaur districts & some parts of Shimla, Mandi districts	Normal; Below normal for Kullu, Kinnaur, Lahaul-Spiti districts & some parts of Chamba, Kangra, Shimla & Mandi districts
<b>Week 4</b> <b>29<sup>th</sup> May</b> <b>to 04<sup>th</sup> June</b>	Normal; Above normal for Una, Bilaspur, Solan districts and some parts of Chamba, Kangra, Sirmaur districts	Normal; Above Normal for Una, Solan districts & some parts of Sirmaur, Shimla districts	Below Normal; Normal for some parts of Kangra, Chamba, Bilaspur, Hamirpur & Una districts

REGION	AREAS/DISTRICTS COVERED
HIGH HILLS	LAHAUL & SPITI, KINNAUR, CHAMBA, UPPER PARTS OF KULLU AND MANDI DISTRICTS
MIDDLE HILLS	SHIMLA, MANDI, KULLU, SOME PARTS OF CHAMBA( SIHUNTA, CHOWARI AND CHAMBA), MOST PARTS OF SOLAN AND SIRMAUR DISTRICTS
LOW HILLS/PLAINS	UNA, BILASPUR, HAMIRPUR, SOME PARTS OF KANGRA ( NURPUR, JWALA & DEHRA), SOLAN( NALAGARH, BADDI, ARKI & KUNIHAR ) AND SIRMAUR ( NAHAN & PAONTA SAHIB) DISTRICTS

**Regards**  
**Met Centre Shimla**

**For latest Weather Bulletin and warnings kindly visit following links**

Website:

Facebook: <https://www.facebook.com/profile.php?id=100018411811087>

Twitter: <https://twitter.com/himachalmausam>

IG: [www.instagram.com/metcentresml/](http://www.instagram.com/metcentresml/)